

# 2026 Summer Newsletter

625 E. Madison Avenue Suite # 1 • Riverton, WY 82501

307-463-0636 • [www.lowerwindrivercd.com](http://www.lowerwindrivercd.com)

Find us on Facebook and like our page! 



## Dates To Remember:

July 3, 2026 – **Happy Independence Day!**  
(observed) Office Closed

July 9, 2026- Board of Supervisors meeting and Budget Hearing, 12 p.m. LWRCD Conference Room

July 25, 2026 - Hazardous Waste Day, Riverton transfer station

July 27-August 1, 2026 - Fremont County Fair, Riverton

August 13, 2026 - Board of Supervisors meeting, 12 p.m. LWRCD Conference room

September 7, 2026 - Labor Day, Office closed!

September 10, 2026 - Board of Supervisors meeting, 12 p.m. LWRCD Conference Room

October 21, 2026 - Well Water Testing Day

**If you or someone you know would like be added to our email distribution list to enjoy our Digital newsletters - please sign up here: [lowerwindrivercd.com/newsletters!](http://lowerwindrivercd.com/newsletters!)**

## BOARD OF SUPERVISORS

Rod Rivers - Chairman

Richard Denke - Vice Chairman

Ron Lucas - Secretary/Treasurer

Nick Biltoft - At-Large Supervisor

Scott Pettit - Urban Supervisor

Meetings are held on the 2<sup>nd</sup> THURSDAY of every month at 12:00 pm and are open to the public

## OFFICE STAFF

Cathy Rosenthal - District Manager

Amanda Ablard - Administrative & Outreach Coordinator

Rodney Carter - Conservation Programs Coordinator

Bobby Thoman - District Engineer

## NATURAL RESOURCE CONSERVATION SERVICE

Jake Hogan - Acting District Conservationist

The Area NRCS, Farm Service Agency and Rural Development are located in the USDA Service Center at 508 N. Broadway Riverton \* 307-856-7524

## BE A VOICE FOR CONSERVATION.

Seeking motivated At-Large  
(residing anywhere within the district)

## CONSERVATION DISTRICT SUPERVISOR

for Lower Wind River Conservation District



IMPORTANT DATES  
TO FILE

AUGUST 5 -  
AUGUST 24



### REGISTERED VOTERS CAN APPLY

Residents residing anywhere within the Lower Wind River Conservation District

*Curious as to where you live within the Lower Wind River Conservation District? See the map below!*

## BOARD RESPONSIBILITIES



Helping create programs to address the conservation concerns of the district, such as soil erosion, and water quality.



Overseeing projects and programs and helping prioritize what is most important, and should receive funding and attention.



Providing staff the direction needed to carry out the district's programs and daily operations.



Attending board meetings, regional and state meetings, and local events to represent the district's interests.

## HOW TO FILE



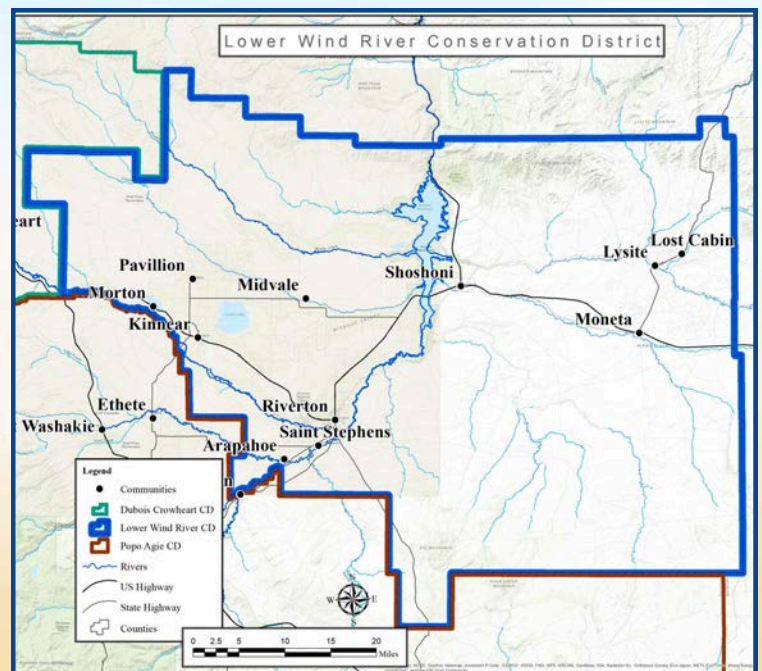
Forms are available at the Fremont County Election office or searching [fremontcountywy.gov/election](http://fremontcountywy.gov/election)



Applications must be filed with the election office not the Conservation District.



There is no filing fee.



## What's Been Happening

Spring is always our busiest season, and spring 2026 was no exception! In addition to implementing our various conservation programs, District staff were actively engaged throughout the area by attending and hosting meetings, educational events, and partner collaborations, including:

- Interagency Meeting with Fremont County partners
- Lower Wind River Weed Management Area Meeting
- Muddy Creek Partners Meeting
- Post-Award Grant Management 2.0
- Conservation Professional Forum
- Hosted Fremont County Local Work Group meeting
- Fremont County FFA Ag Issues Team presentation at the April Board of Supervisors meeting
- Garden Expo in Lander

Thank you to everyone who stopped by the LWRCD booth at the Garden Expo! We enjoyed visiting with you and appreciate those who completed our small acreage equipment needs survey. Your feedback helps guide future programs and services. We hope you enjoy your new LWRCD tote bag!



## Poster Contest Winners!

The following students were selected in their respective age divisions for their outstanding interpretations of this year's theme:

- Left: Benmji Anderson - 1st Place (2nd-3rd Grade)
- Middle: Wade Hardman - 1st Place (7th - 9th Grade)
- Right: Theo Anderson - 1st Place (Pre K-1st)

**Congratulations!** Please visit our website to view their wonderful posters up close!



After reviewing many beautiful and creative submissions from students across the District, we are proud to announce the winners of this year's local poster contest. This annual event invited K-12 students to express their creativity while learning about natural resources and conservation. This year's theme, **"Soil: Where It All Begins,"** encouraged students to explore the vital role soil plays in supporting life, agriculture, and healthy ecosystems.

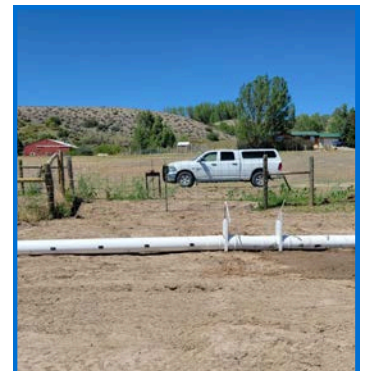
Their entries will advance to the state-level competition hosted by the Wyoming Association of Conservation Districts. State winners then move on to compete in the National Association of Conservation Districts (NACD) poster contest, with opportunities to earn cash prizes at every level. A big thank-you to students, educators, and families for participating!

## Technical Assistance Needs and Resource and Community Enhancement Cost-Share Program

Thanks to those who submitted applications for Resource and Community Enhancement projects this past spring. The LWRCD was able to approve and award eleven resource and community enhancement projects to be completed within the 26-27 Fiscal Year.

If you have a project in mind, have irrigation questions or are in need of some natural resource Technical / Engineering Assistance, call or stop by our office!

*Buried pipeline project (left) and gated pipeline conversion project (right) completed in the Fiscal Year with cost-share funding provided in part by LWRCD.*



# What's Been Happening

## Tree & Shrub Sale

Thank you to everyone who helped make the 2026 Spring Tree Sale a success! A special thank you to our incredible volunteers who generously gave their time to sort and pack trees. We truly could not do it without you, and it is rewarding to see so many familiar faces return year after year. We are deeply grateful for your support.

To everyone who placed an order, **Thank You!** The Annual Tree and Shrub Sale is one of LWRCD's longest-standing programs, and your participation helps ensure we can continue to serve our community and promote conservation efforts. If you have pictures or information from past seedling plantings, please share as we would love to know how the seedling tree/shrub program has worked for you! Planning for the 2027 Spring Tree Sale will begin in the coming months, and we welcome your suggestions. Online ordering will begin late fall!



- 194 total bundles were distributed, equating to 4850 seedling trees and shrubs sold this season.
- 73 orders placed, many included multiple species, including 10 different species by one customer!
- Top-Selling Species: Lilacs, Chokecherry, Aspen, Co. Blue Spruce



## No-Till Drill Program

The district provides two Great Plains no-till drills, a 6 ft. and a 10 ft., available for lease to help promote conservation practices during planting. With our mild winter, spring planting began early on February 25, 2026, and so far, the drills have been hauled more than 2000 miles to 24 producers and seeded over 1200 acres across Fremont County.

LWRCD was also invited by the Wind River Food Sovereignty Project to participate in an educational field demonstration in early June, focused on no-till planting and soil health. We appreciate the invite and providing educational opportunities with the drills. There is still time to schedule use of the drills this season, and now is also an excellent time to begin planning for fall planting. Reserving a drill early helps ensure drill availability and allows producers to better prepare seed mixes and planting schedules. To learn more or reserve a drill, please visit our website or contact the LWRCD office.



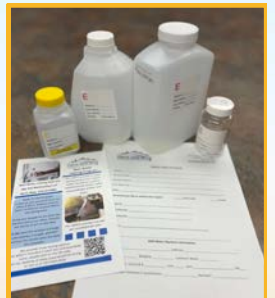
Rodney assisting a producer in May with seed mix calibration following delivery of the 10-foot Great Plains drill.

## Well Water and Soil Testing

The LWRCD's well water testing program continues to support rural well owners within the LWRCD, through a cost-share initiative that offers essential water quality analysis in partnership with Energy Laboratories in Casper. This spring, we collected 51 tests, helping residents monitor the safety and quality of their drinking water.

We offer one more testing event this year on **October 21, 2026**.

Well water testing details, options and pricing are listed on our website. Test kits are available for pickup at our office prior to the event, and water samples must be submitted using LWRCD-provided testing kits.



The LWRCD offers soil testing through Stukenholtz Laboratory in Twin Falls, Idaho. So far this season, we've assisted with 21 samples from local landowners and gardeners! To participate, stop by our office to pick up a soil bag and probe, along with instructions for collecting your sample. Return the sample to our office, and we'll handle the shipping and provide your results once they are complete. The cost is \$10 per sample. Landowners are also welcome to use a lab of their choice. Contact the District for information on alternate testing options.

# Happening this Summer

## NEW Programs!



The LWRCD is excited to announce that our **Sticker Burr Roller** Rental Program is now available to producers throughout the district! Sticker burrs (like Puncturevine, aka Goatheads) can create significant challenges as outlined in the "Puncturevine" brochure on the next pages of the newsletter. The educational brochure was produced by the Fremont County Weed and Pest and Lower Wind River Weed Management Area group. To also help address issues caused by Puncturevine, LWRCD added the Sticker Burr Roller to our equipment rental program. The Roller is designed to collect & remove sticker burr seed heads from infested areas, helping reduce the spread of burrs and lower future seed production.

**How the Program Works:** Producers are responsible for transporting the equipment to and from their property and must pay prior to use. Landowners interested in utilizing the Sticker Burr Roller are encouraged to contact the district or visit our website for rental rates, scheduling availability, & program requirements.  
[lowerwindrivercd.com/weeds](http://lowerwindrivercd.com/weeds)



The LWRCD is also excited to announce that a **RanchWorx 8' x 36" SC Aerator** will soon be available to producers within the LWRCD district boundary. Why is this new equipment important for our area?



- Pasture aeration is a management practice designed to reduce soil compaction, improve water infiltration, stimulate root growth, and enhance overall pasture productivity while maintaining no-till principles.
- The RanchWorx Aerator uses specialized blades to create fractures in the soil profile, allowing water, air, and nutrients to move more effectively through the root zone.

The District is currently developing the program and will share additional details as they become available. Updates and program information will be posted on our website and included in our Fall Newsletter. In the meantime, those interested can learn more about the RanchWorx Aerator by visiting the official website: [RanchWorx Pasture Aerators](http://RanchWorx Pasture Aerators).

### New Recycling Bin Cost-Share Program!



Make recycling & transporting easier with LWRCD's new stackable recycling bin cost-share program. Recycling helps reduce landfill waste, conserve natural resources, and is an easy practice anyone can do! **Beginning July 1st** bins will be available for \$18 each or \$50 for a set of three (tax not included). Give us a call or email if interested!

### Wyoming Natural Resource Foundation

NOW ACCEPTING APPLICATIONS

### Gary Beach Memorial SCHOLARSHIP

Open to applicants enrolled at least at a junior-level (\$9 credit hours completed) or higher at the University of Wyoming or an accredited Wyoming community college eligible Bachelor's degree program in one of the following academic majors: environment and natural resources, water resources, rangeland ecology and watershed management, or a related field.

Award Amount \$1,650

Scan the QR to visit our website to access the application form



Please submit application by July 20<sup>th</sup>, 2026

### Cowboy CORNHOLE TOURNAMENT

August 11, 2026  
Bags Fly at 12:00 pm

Located at the Event Tent on the Wyoming State Fairgrounds  
\$25 per person  
Day of entries accepted  
All ages welcome

Join us for a Switcholio style Cornhole Tournament to support the Wyoming FFA Foundation & Wyoming Natural Resource Foundation!

Register or Sponsor Here:



Questions? Email: [erin@wyoffoundation.org](mailto:erin@wyoffoundation.org)

# FREE HOUSEHOLD HAZARDOUS WASTE

## DROP-OFF EVENT

Safely dispose of unwanted household hazardous materials at no cost.



SATURDAY  
JULY 25, 2026



RIVERTON  
TRANSFER STATION  
329 NORTH SMITH ROAD



9:00 A.M. –  
2:00 P.M.



### ACCEPTED MATERIALS INCLUDE:

- Oils & Antifreeze
- Batteries
- Oil-Based Paints
- Aerosols
- Solvents
- Agricultural Chemicals
- Freon
- Unknown Materials (screened onsite)



### NOT ACCEPTED:

- Explosives
- Radioactive Waste
- Asbestos



Year-round recycling and disposal options available at District facilities.



For additional information:

307-332-7040  
[trashmatters.org](http://trashmatters.org)

### SPECIAL THANKS TO:

Fremont County Solid Waste Disposal District • City of Lander • City of Riverton  
Bureau of Land Management • Fremont County Weed and Pest  
Lower Wind River Conservation District • Wyoming Waste Systems



# PUNCTUREVINE

## Best management practices for homeowners

*Tribulus terrestris*

### History and Identification



Puncturevine was introduced from southern Europe and is now widely scattered over much of the United States. The summer annual plant thrives in hot, dry conditions.

The plant has a small yellow flower and produces spiny seeds from July to early October. A single plant can produce 200-5000 seeds and are viable for up to five years. Puncturevine grows quickly forming dense mats with trailing stems that can extend up to five feet long.

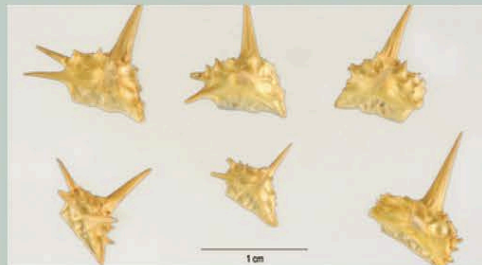
The plant is cold sensitive, but seeds are cold tolerant. It has a deep taproot which enables it to extract soil moisture from great depths.

### What is the problem?

If left unchecked, Puncturevine grows quickly. While early stages may not cause an immediate problem, the resulting large mats are difficult to control.



The plant contains chemical compounds which can cause injury to livestock, with sheep being particularly vulnerable. The seeds can also cause damages to barefeet and tires. Responding to concerns, some of Wyoming's counties have added the plant to their declared invasive species list.



### Is it worth controlling?



Puncturevine is easily spread long distances by animals and vehicles due to its hitchhiking sharp seeds. Although controlling established plant communities is challenging, results are rewarding.

It is in the landowners interest to treat puncturevine sooner rather than later. Late state infestations where native plants have been replaced require re-establishing through reseeding.

#### Benefits of Removal:

- Enhanced property value.
- Prevent injury to animals and people.
- Prevent damage to tires and equipment.
- Increased physical access.
- Protect native plant communities.
- Encourage biodiversity.



## Prevention

The cheapest method of control is prevention.

- Learn to recognize the plant in each of its growth stages.
- Search hot, dry areas with little vegetation. Pay special attention to edges, driveways, between rows in the garden, or bare ground.
- Mulch in ornamental beds helps discourage development.
- Healthy lawns reduce areas available for establishment. Bare ground cover consistently increases abundance, emergence, and persistence
- Research suggests that areas with low temperatures, low light intensities, and wet soil can decrease seed germination.
- As much as possible avoid parking in areas with puncturevine present. If unavoidable, remove seeds before leaving the area.
- Play, Clean, Go!

## Mechanical

Mechanical removal can be successful, but you must ensure that you remove all parts of the plant, leaving no seeds or cuttings behind.

- Hand removal for smaller infestations is highly effective.
- Fold back the sprawling growth and dig up the taproot, removing the entire plant and sweeping up seeds.
- When hand pulling, be careful if thorns are present, they usually develop quickly after the yellow flower.
- Hoeing or shoveling to cut the tap root prior to seed set. If the plant has vined out and set seed, you will need to carefully collect the vines and seeds and dispose of them to reduce the seed bank.
- Dragging a piece of carpet over the ground or sweeping can pick up seeds.

## Herbicides

Sometimes the scale of the problem constitutes the use of herbicides.

- Post-emergent options like 2,4-D, glyphosate, and dicamba for active growth, and pre-emergent products containing oryzalin, benefin, or trifluralin to prevent germination may be available at local hardware stores.
- Remember that glyphosate products (Roundup) is not selective and will control grass along with weeds.
- Beware of pollinators and spray drift.
- Be sure to read the LABEL. The LABEL is the law.
- Fremont County Weed and Pest has cost share available for select chemicals controlling this species. Contact your local weed and pest office for further recommendations.

## Where can I find help?

Contact your local Weed and Pest District for technical assistance relating to methods of treatment.

Weed and Pest  
[\(307\) 332-1052](tel:3073321052)



Conservation District  
[\(307\) 463-0636](tel:3074630636)



City of Riverton  
[\(307\) 857-7749](tel:3078577749)

